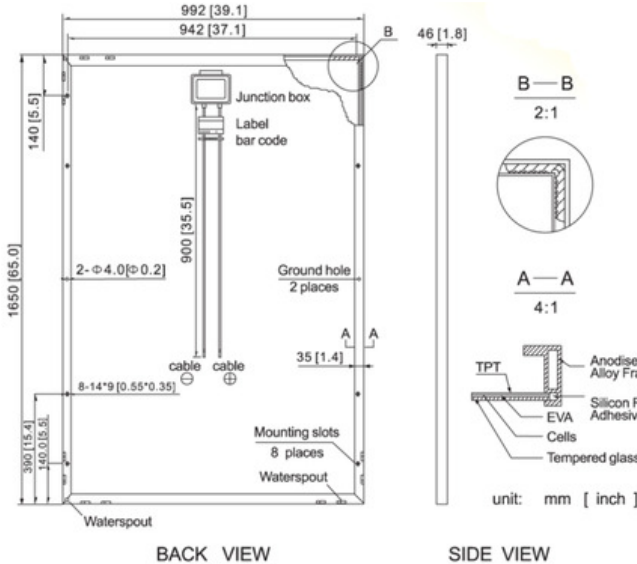


CEP-250M-60 SERIES

Monocrystalline Silicon Solar Module

High efficiency photovoltaic module using silicon nitride coated monocrystalline silicon cells

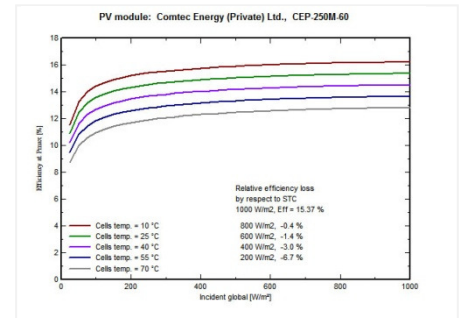
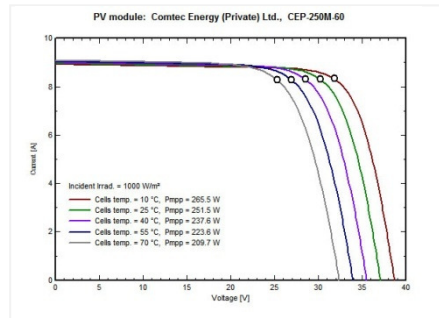
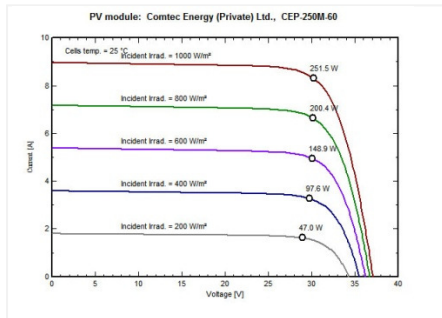


Mechanical Characteristics

Cell Size (mm)	156 x 156
Module Size (mm)	1650 x 992 x 46
No. of cells	60 (6x10)
Frame Type	Aluminium
Weight (Kg)	19.6
No. of mounting holes	8
No. of waterspouts	16

Temperature Coefficients

NOCT	45°C ± 2°C
Temperature coefficient of I_{sc}	0.06%/°C
Temperature coefficient of V_{oc}	-0.34%/°C
Temperature coefficient of P_{max}	-0.45%/°C
Power Tolerance	± 3%
Working Temperature	-40°C to +85°C



Electrical Characteristics

Model	CEP-230M-60	CEP-235M-60	CEP-240M-60	CEP-245M-60	CEP-250M-60
P_m (Wp)	230	235	240	245	250
V_{mp} (Volts)	28.94	29.38	29.86	30.21	30.50
I_{mp} (Amps)	7.95	8.00	8.04	8.11	8.20
V_{oc} (Volts)	37.64	37.70	37.77	37.86	38.00
I_{sc} (Amps)	8.52	8.59	8.64	8.70	8.78
Max System Voltage	1000VDC	1000VDC	1000VDC	1000VDC	1000VDC

STC : Irradiance 1000W/m², Temperature 25°C, AM=1.5

Model	CEP-250M-60	CEP-255M-60	CEP-260M-60	CEP-265M-60	CEP-270M-60
P_m (Wp)	250	255	260	265	270
V_{mp} (Volts)	30.50	30.92	31.18	31.48	31.73
I_{mp} (Amps)	8.20	8.25	8.34	8.42	8.51
V_{oc} (Volts)	38.00	38.10	38.20	38.31	38.42
I_{sc} (Amps)	8.78	8.84	8.92	8.96	8.99
Max System Voltage	1000VDC	1000VDC	1000VDC	1000VDC	1000VDC

STC : Irradiance 1000W/m², Temperature 25°C, AM=1.5

WH #6, Plot 277, Street 1, Industrial Area I-9/3
Islamabad 44000, Pakistan
T : +92-51-254-3677, E : info@comtec-energy.com

COMTEC ENERGY
www.comtec-energy.com

